



Road Fatalities in the Northern Territory for the Period 01 January to 31 July 2002 Status Report

There were 24 road fatalities in the Northern Territory from 01 January to 31 July 2002, equal for the same time in 2001. The 24 deaths were a result of 20 fatal crashes, equal for the same time in 2001.

20 fatal crashes:

- 6 occurred where the car ran off the road without colliding into something first.
7 were pedestrians struck by vehicles.
1 was "sideswipe".
2 resulted from an animal struck by a vehicle.
3 were result of single vehicle roll over.
1 was a head on collision.

20 fatal crashes:

- 14 occurred in rural areas and 6 in urban areas.
18 occurred on sealed-dry roads and 2 on unsealed-dry road.

24 fatalities:

- 16 were male and 8 were female.
13 were Aboriginal NT residents, 9 were non-Aboriginal NT residents and 2 were interstate visitors.

Of the 13 Aboriginal NT resident fatalities:

- 2 drivers - 1 was not wearing a seatbelt and 1 unknown.
5 passengers - 4 were not wearing a seatbelt and 1 unknown.
6 pedestrians.

Of the 9 non-Aboriginal NT resident fatalities:

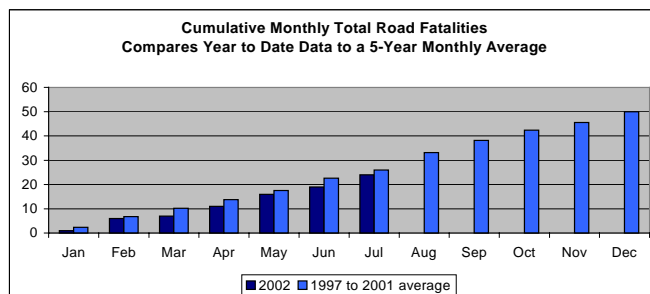
- 4 drivers - 2 were wearing a seatbelt, 1 did not and 1 unknown
3 passengers - 1 was wearing a seatbelt, 1 did not and 1 unknown.
2 motorcyclists.

Of the 2 interstate visitor fatalities:

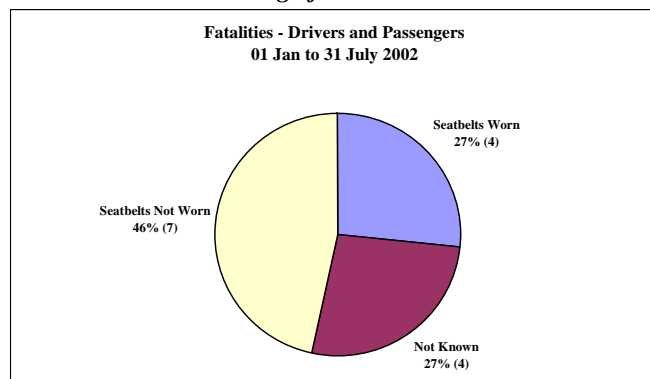
- 1 passenger - was wearing a seatbelt.
1 pedestrian.

Road Fatalities: -

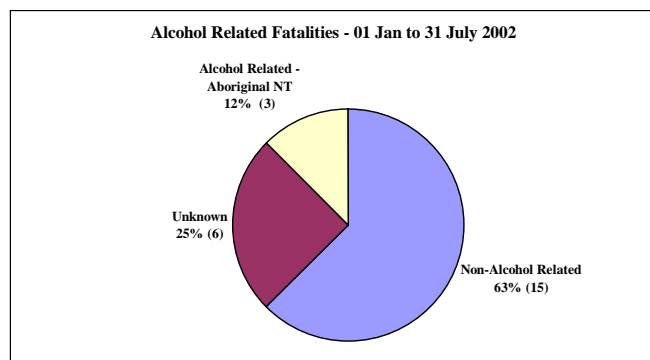
Table with 4 columns: Year, NT, NT Per 100,000 Population, Australia Per 100,000 Population. Rows for 2001, 2000, and 1999.



Non-Wearing of Seatbelt Fatalities



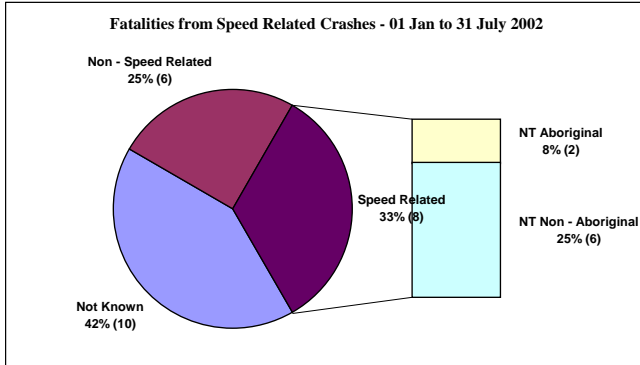
Alcohol Related Fatalities





Road Fatalities in the Northern Territory for the Period 01 January to 31 July 2002 Status Report

Speed Related Fatalities



Vehicle Crashes Involving Heavy Vehicles:

| Heavy Vehicles Involved Crashes 01 Jan to 31 July 2002 | Driver Not Wearing Seatbelt | Driver BAC > 0 | Speed Related | Fatigue Related |
|--|-----------------------------|----------------|---------------|-----------------|
| Fatal | 0 | 0 | 0 | 0 |
| Serious Injury | 0 | 0 | 0 | 0 |
| Minor Injury | 0 | 0 | 0 | 0 |
| Non-injury | 1 | 0 | 1 | 0 |
| Total | 1 | 0 | 1 | 0 |

Annual Fatality Statistics

| Year | 1998 | 1999 | 2000 | 2001 | 2002 |
|-------------------------------|-----------|-----------|-----------|-----------|-----------|
| Aboriginal NT Residents | 29 | 17 | 18 | 25 | 13 |
| Non - Aboriginal NT Residents | 25 | 24 | 23 | 12 | 9 |
| Interstate visitors | 5 | 4 | 3 | 4 | 2 |
| Overseas visitors | 10 | 4 | 7 | 9 | 0 |
| Total | 69 | 49 | 51 | 50 | 24 |

01 Jan to 31 July 2002

| Highest Injury Level Crashes | Bus & Coach | | Rigid Truck > 4.5 GVM | | Articulated Vehicle (Semi) | | Road Train (Double) | | Road Train (Triple) | | Total |
|------------------------------|-------------|------|-----------------------|------|----------------------------|------|---------------------|------|---------------------|------|-----------|
| | NT | Int. | NT | Int. | NT | Int. | NT | Int. | NT | Int. | |
| Fatal | | | | | | | | | 1 | | 1 |
| Serious | 1 | | 1 | | 1 | | | | | | 3 |
| Minor | 3 | | 2 | | | | 2 | | 3 | 3 | 13 |
| Non-injury | 9 | | 13 | 3 | 3 | 1 | 1 | 0 | 3 | 2 | 35 |
| Total | 13 | | 19 | | 5 | | 3 | | 12 | | 52 |

Note: Int. = Interstate

| | 12 months to 31 July 2001 | 12 months to 31 July 2002 | % Change |
|-------------------------------------|---------------------------|---------------------------|----------|
| Total Fatalities | 47 | 50 | 6.4% |
| Total Injuries | 1207 | 937 | -22.4% |
| Speed- Related | | | |
| Total Fatal Crashes | 43 | 43 | 0.0% |
| Total Injury Crashes | 827 | 644 | -22.1% |
| Total Non-injury Crashes | 1618 | 1425 | -11.9% |
| Seatbelt not Worn Fatalities | | | |
| Fatalities | 14 | 18 | 28.6% |
| Injuries | 62 | 45 | -27.4% |
| Speed- Related | | | |
| Fatal Crashes | 6 | 9 | 50.0% |
| Injury Crashes | 76 | 69 | -9.2% |
| Non-injury Crashes | 108 | 89 | -17.6% |
| Alcohol-Related | | | |
| Fatal Crashes | 14 | 14 | 0.0% |
| Injury Crashes | 95 | 51 | -46.3% |
| Non-injury Crashes | 84 | 70 | -16.7% |

| Highest Injury Level Crashes | 12 months to 31 July 2001 | | 12 months to 31 July 2002 | | % Change | |
|------------------------------|---------------------------|------|---------------------------|------|--------------|--------|
| | NT | Int. | NT | Int. | NT | Int. |
| Fatal | 4 | 0 | 2 | 0 | -50.0% | 0.0% |
| Serious | 8 | 3 | 7 | 2 | -12.5% | -33.3% |
| Minor | 11 | 6 | 14 | 3 | 27.3% | -50.0% |
| Non-injury | 49 | 15 | 47 | 12 | -4.1% | -20.0% |
| Total | 96 | | 87 | | -9.4% | |

This report is produced using the Vehicle Accident Database. Information is correct as at 31 July 2002.

Contact Officers
Graham Kwong Research /Project Officer, tel: 89247147
Don Shean, VADB Manager, tel: 89247352

Accidents within the last four (4) weeks may not be reflected in the Vehicle Accident Database

