



Summary overview: April-June 2005

Table 1.1 Break up of fatal crashes and fatalities

	2nd Quarter	YTD
Fatal crashes break up	11	19
By crash type		
Hit pedestrian	1	1
Ran off road	7	11
Overtaken	1	3
Angle collision	2	3
Rear end	0	1
By road surface type		
Sealed - Dry	5	9
Sealed - Wet	1	2
Unsealed - Dry	3	3
Not yet stated	2	5
By area		
Rural	9	14
Urban	2	5

	2nd Quarter	YTD
Fatalities break up	12	22
By gender		
Male	6	15
Female	6	7
By residency status		
NT Indigenous	6	7
NT non-Indigenous	6	10
Interstate	0	4
Overseas	0	1

April - June 2005

For further information contact the
Road Safety Branch
Department of Planning and Infrastructure
GPO Box 2520
Darwin NT 0801
Phone: (08) 8924 7147
Fax: (08) 8924 7077
Email: roadsafety@nt.gov.au
Web: www.roadsafety@nt.gov.au

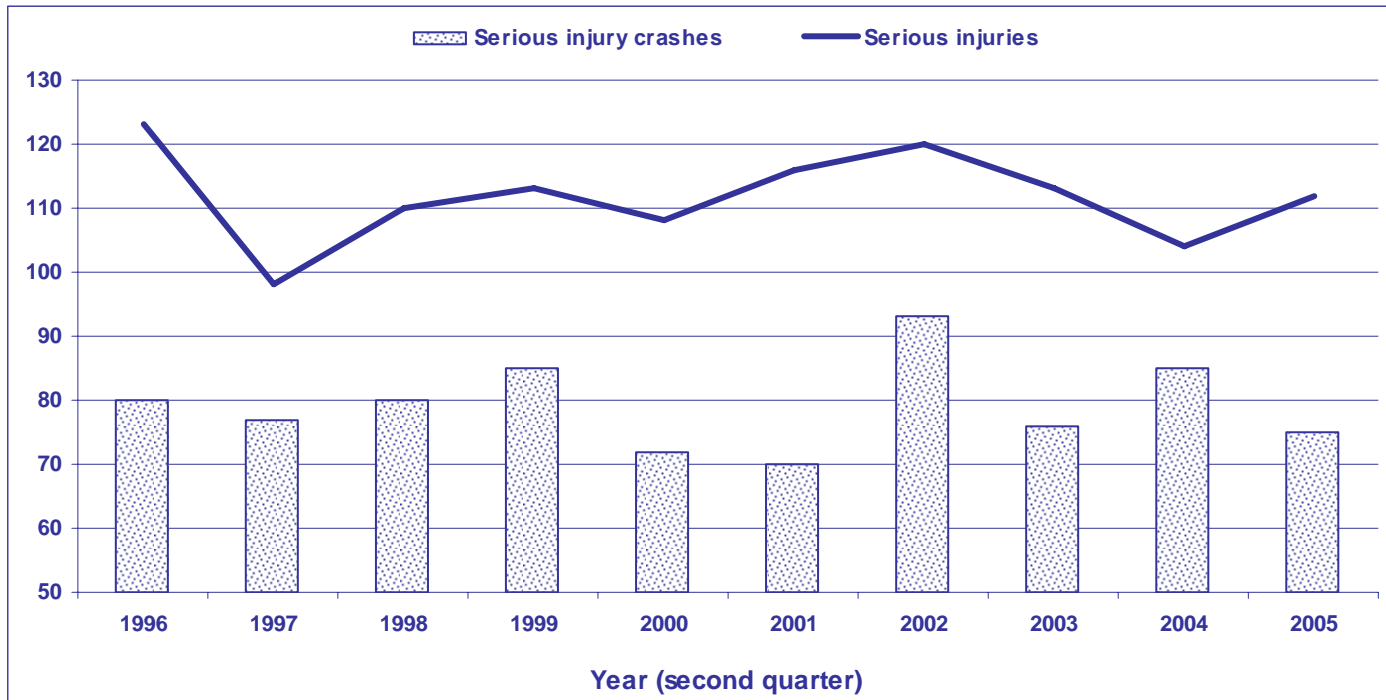
Vision:

Reduced Road Trauma

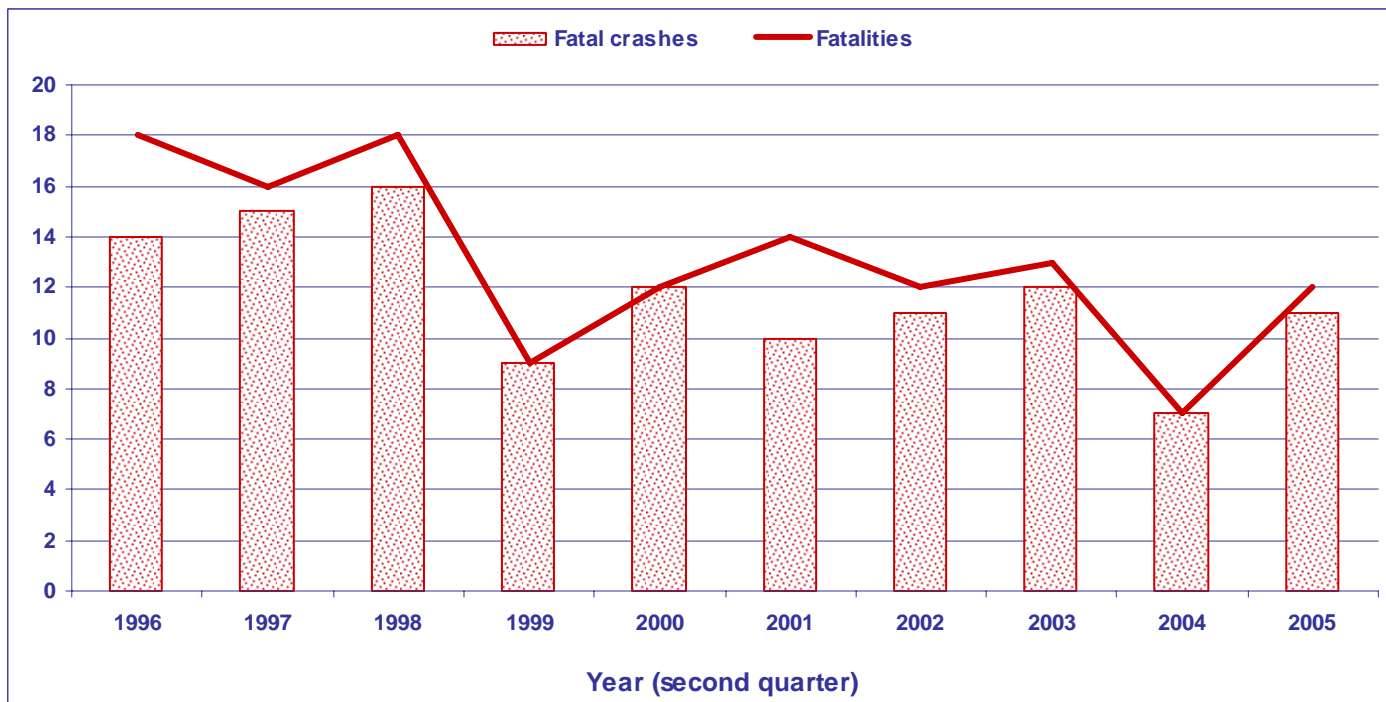
Table 1-2: Summary of road crashes and fatalities

	April to June 2004	April to June 2005	% Change	12 months to 30 June 2004	12 months to 30 June 2005	% Change
Total fatalities	7	12	71.4%	45	40	-11.1%
Total male fatalities	6	6	0.0%	33	25	-24.2%
Total female fatalities	1	6	500.0%	12	15	25.0%
Total injuries	243	238	-2.1%	1097	1007	-8.2%
Total fatal crashes	7	11	57.1%	39	36	-7.7%
Total injury crashes	173	146	-15.6%	754	660	-12.5%
Total non-injury crashes	360	349	-3.1%	1505	1327	-11.8%
Seatbelts not worn						
Fatalities	1	6	400.0%	17	18	5.9%
Injuries	10	27	170.0%	59	88	49.2%
Speed related						
Fatal crashes	0	1	100.0%	6	8	33.3%
Injury crashes	23	19	-17.4%	88	77	-12.5%
Alcohol related						
Fatal crashes	1	3	200.0%	21	16	-23.8%
Injury crashes	23	16	-30.4%	82	75	-8.5%
Fatigue related						
Fatal crashes	1	0	-100.0%	5	1	-80.0%
Injury crashes	4	3	-25.0%	26	23	-11.5%
Pedestrian fatalities						
Indigenous	1	1	0.0%	9	4	-55.6%
Non-Indigenous	1	0	-100.0%	3	0	-100.0%

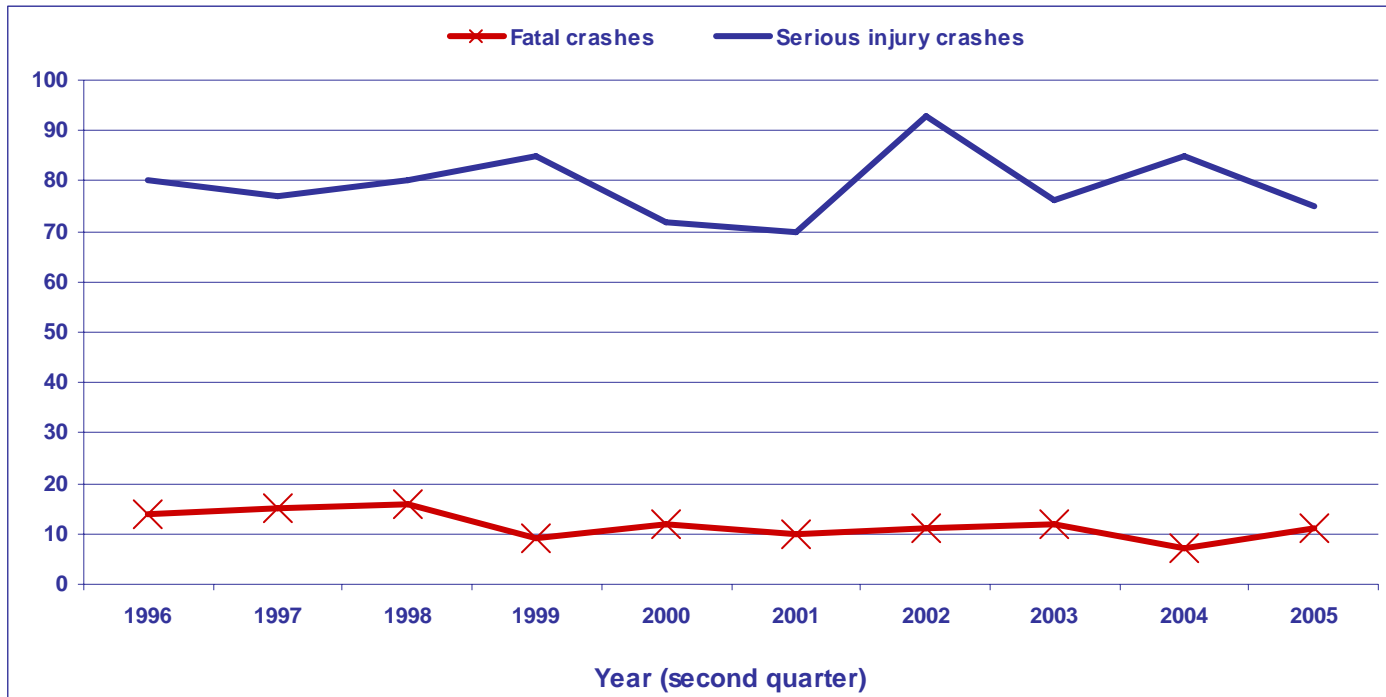
Graph 1-1: Serious injury crashes and serious injuries



Graph 1-2: Fatal crashes and fatalities



Graph 1-3: Fatal crashes and serious injury crashes



Graph 1-4: Fatalities - Current year against five-year average

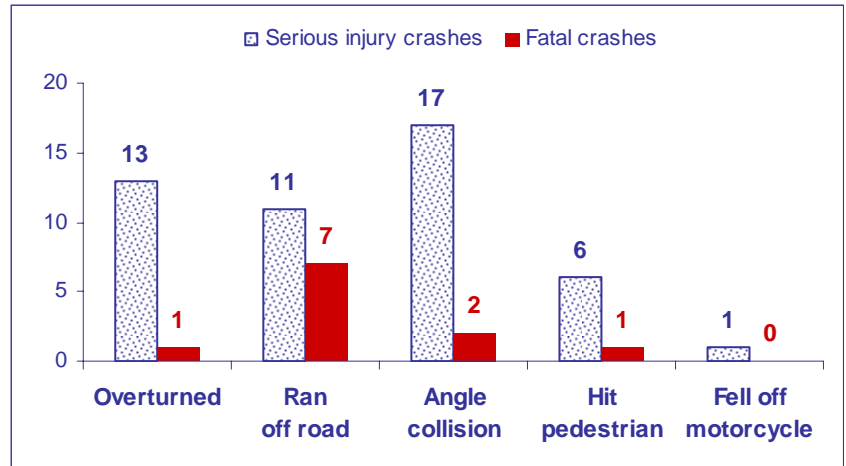


2-1: Serious injury/fatal crashes by crash type

Serious injury crashes

Crash type	2005	Average 2000-2004	% Total
Overtuned	13	17.4	17.3%
Ran off road	11	14.0	14.7%
Angle collision	17	13.4	22.7%
Hit pedestrian	6	9.6	8.0%
Fell off motorcycle	1	5.6	1.3%
Rear end	15	5.2	20.0%
Side swipe	1	3.4	1.3%
Head on	2	2.2	2.7%
Hit fixed object	2	2.0	2.7%
Other accident	2	1.8	2.7%
Hit parked vehicle	1	1.4	1.3%
Hit other animal	2	1.0	2.7%
Hit cattle/buffalo	0	0.6	0.0%
Hit light pole	0	0.4	0.0%
Hit power pole	0	0.4	0.0%
Unknown	1	0.4	1.3%
Hit horse/camel	1	0.2	1.3%
Hit other object	0	0.2	0.0%
Total	75	79.2	100.0%

Top five crash type

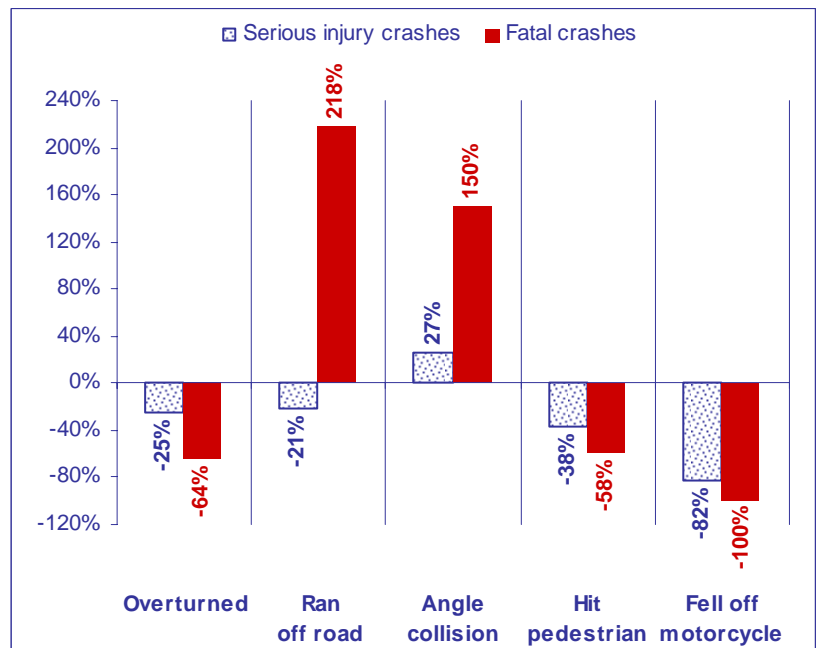


Top five crash data for second quarter 2005

Fatal crashes

Crash type	2005	Average 2000-2004	% Total
Overtuned	1	2.8	9.1%
Hit pedestrian	1	2.4	9.1%
Ran off road	7	2.2	63.6%
Angle collision	2	0.8	18.2%
Head on	0	0.8	0.0%
Side swipe	0	0.4	0.0%
Fell off motorcycle	0	0.2	0.0%
Hit cattle/buffalo	0	0.2	0.0%
Hit fixed object	0	0.2	0.0%
Hit other animal	0	0.2	0.0%
Hit parked vehicle	0	0.2	0.0%
Total	11	10.4	100.0%

Top five crash type - trend 2005



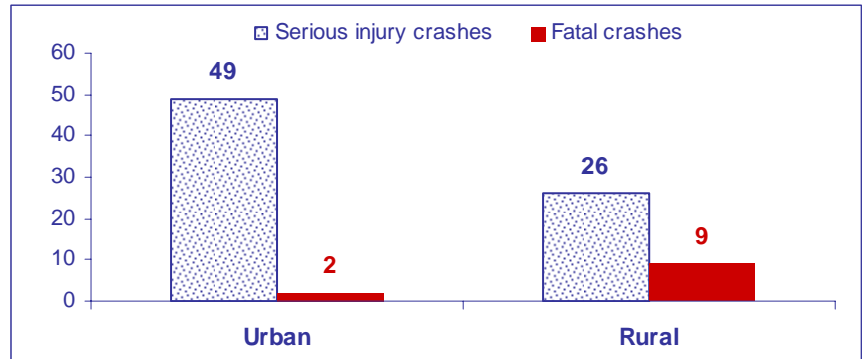
Percentage change between 2005 and corresponding five-year average

2-2: Serious injury/fatal crashes by area (rural/urban)

Serious injury crashes

Area	2005	Average 2000-2004	% Total
Urban	49	45.0	65.3%
Rural	26	34.2	34.7%
Total	75	79.2	100.0%

Crashes by area

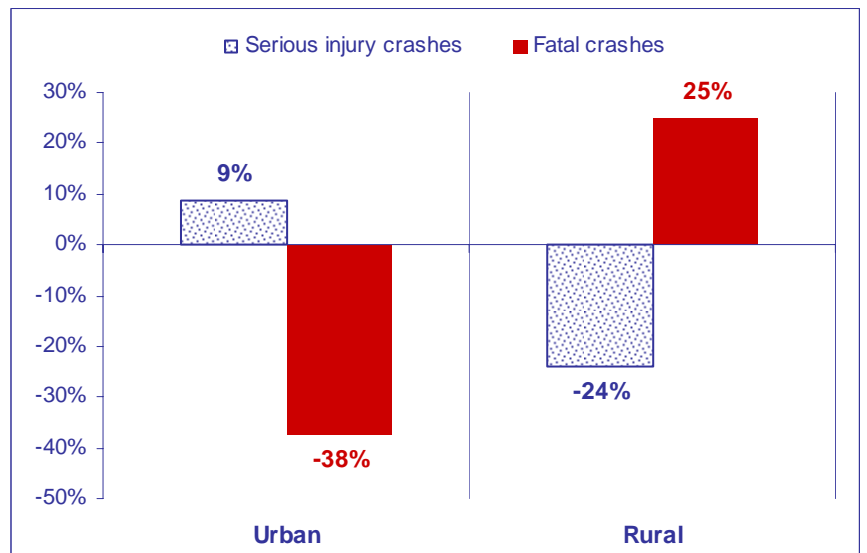


Crash data for second quarter 2005

Fatal crashes

Area	2005	Average 2000-2004	% Total
Rural	9	7.2	81.8%
Urban	2	3.2	18.2%
Total	11	10.4	100.0%

Crashes by area - trend 2005



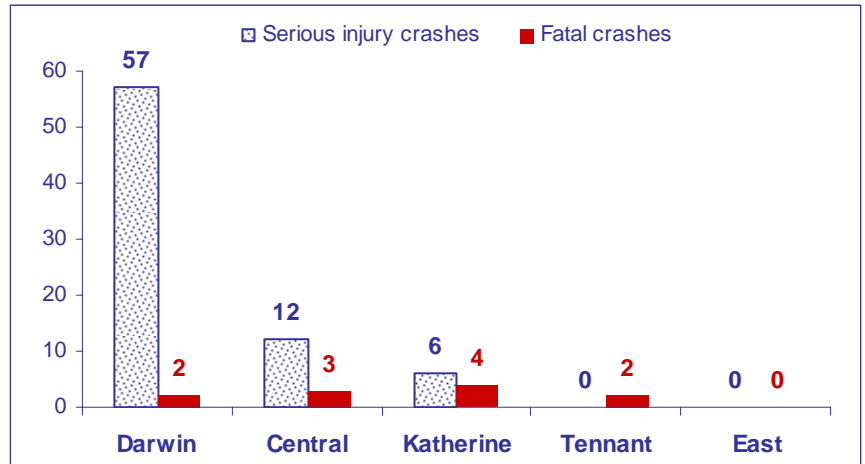
Percentage change between 2005 and corresponding five-year average

2-3: Serious injury/fatal crashes by region

Serious injury crashes

Region	2005	Average 2000-2004	% Total
Darwin	57	51.0	76.0%
Central	12	14.6	16.0%
Katherine	6	8.6	8.0%
Tennant	0	3.4	0.0%
East	0	1.6	0.0%
Total	75	79.2	100.0%

Crashes by region

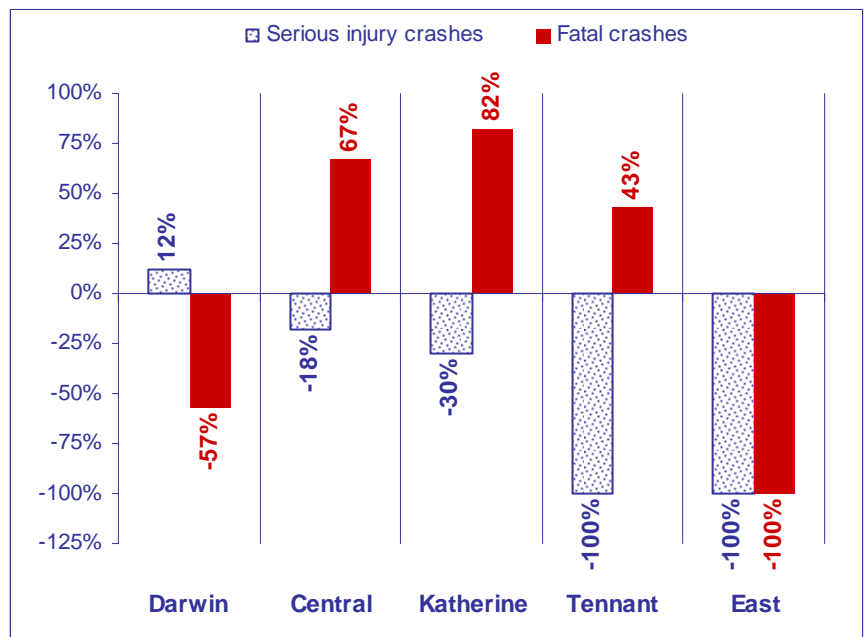


Crash data for second quarter 2005

Fatal crashes

Region	2005	Average 2000-2004	% Total
Darwin	2	4.6	18.2%
Katherine	4	2.2	36.4%
Central	3	1.8	27.3%
Tennant	2	1.4	18.2%
East	0	0.4	0.0%
Total	11	10.4	100.0%

Crashes by region - trend 2005



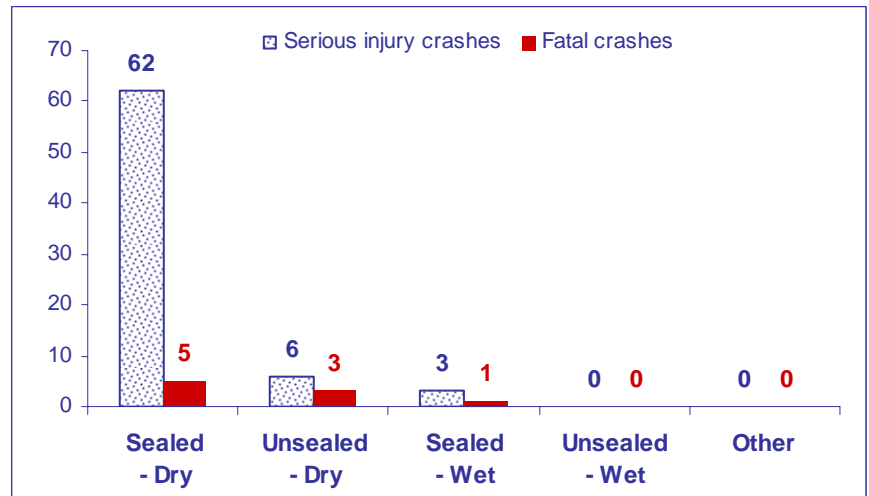
Percentage change between 2005 and corresponding five-year average

2-4: Serious injury/fatal crashes by road condition

Serious injury crashes

Road Condition	2005	Average 2000-2004	% Total
Sealed - Dry	62	62.6	82.7%
Unsealed - Dry	6	11.2	8.0%
Sealed - Wet	3	2.6	4.0%
Not stated	4	1.6	5.3%
Unsealed - Wet	0	1.2	0.0%
Other	0	0.0	0.0%
Total	75	79.2	100.0%

Crashes by road condition

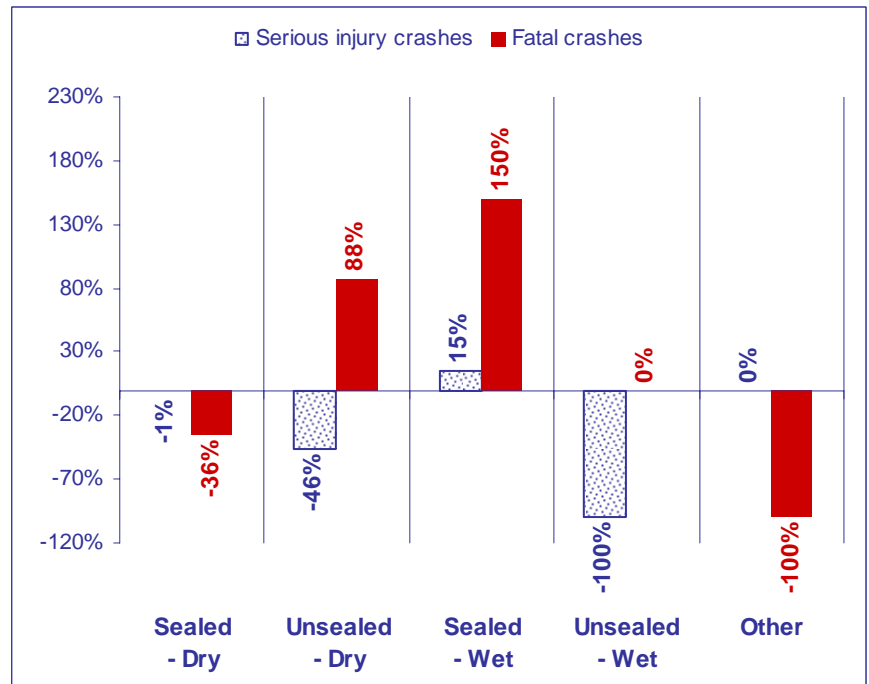


Crash data for second quarter 2005

Fatal crashes

Road Condition	2005	Average 2000-2004	% Total
Sealed - Dry	5	7.8	45.5%
Unsealed - Dry	3	1.6	27.3%
Other	0	0.4	0.0%
Sealed - Wet	1	0.4	9.1%
Not stated	2	0.2	18.2%
Total	11	10.4	100.0%

Crashes by road condition - trend 2005



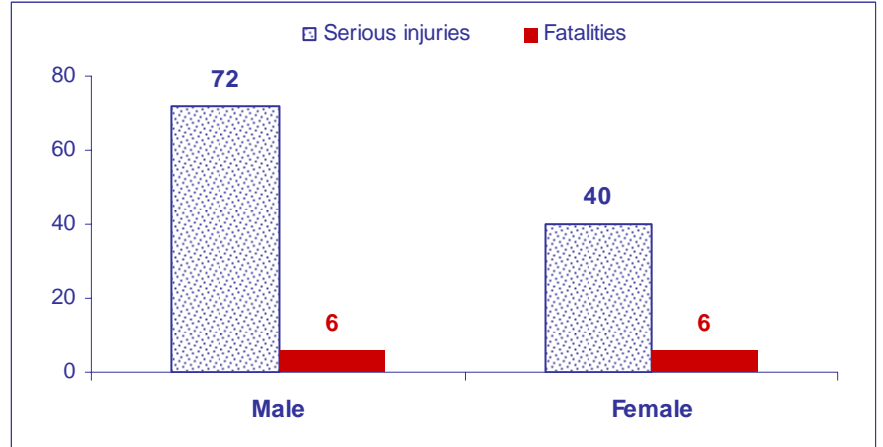
Percentage change between 2005 and corresponding five-year average

3-1: Serious injuries/fatalities by gender

Serious injuries

Gender	2005	Average 2000-2004	% Total
Male	72	74.0	64.3%
Female	40	38.2	35.7%
Total	112	112.2	100.0%

Serious injuries/fatalities by gender

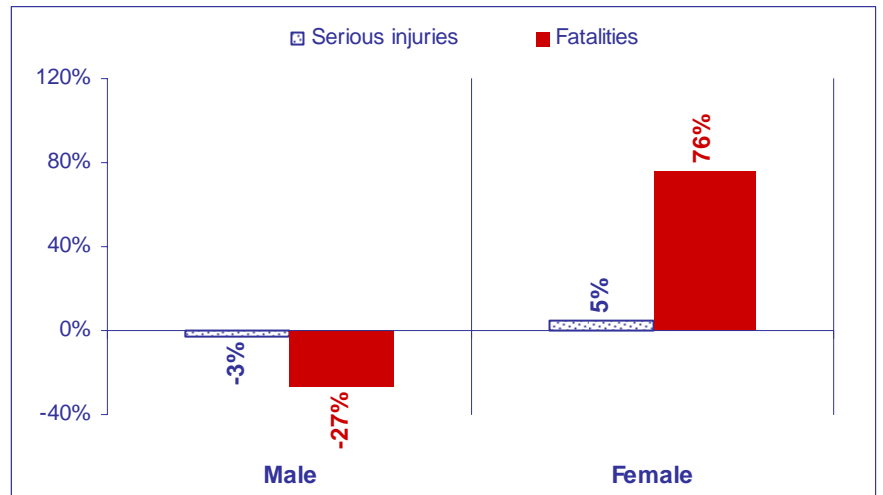


Road trauma data for second quarter 2005

Fatalities

Gender	2005	Average 2000-2004	% Total
Male	6	8.2	50.0%
Female	6	3.4	50.0%
Total	12	11.6	100.0%

Serious injuries/fatalities by gender - trend 2005



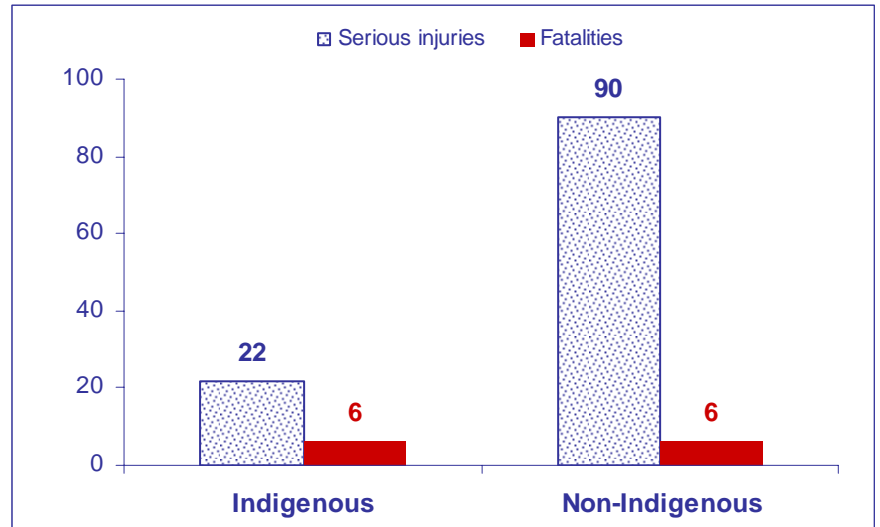
Percentage change between 2005 and corresponding five-year average

3-2: Serious injuries/fatalities - Indigenous and Non-Indigenous

Serious injuries

Indigenous and Non-Indigenous	2005	Average 2000-2004	% Total
Non-Indigenous	90	85.4	80.4%
Indigenous	22	26.6	19.6%
Not stated	0	0.2	0.0%
Total	112	112.2	100.0%

Indigenous and Non-Indigenous

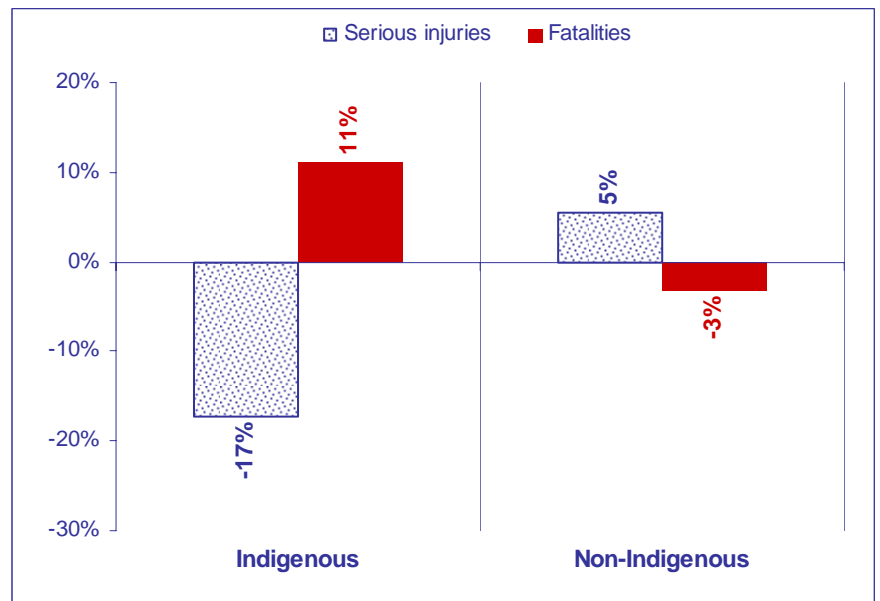


Road trauma data for second quarter 2005

Fatalities

Indigenous and Non-Indigenous	2005	Average 2000-2004	% Total
Non-Indigenous	6	6.2	50.0%
Indigenous	6	5.4	50.0%
Total	12	11.6	100.0%

Indigenous and Non-Indigenous



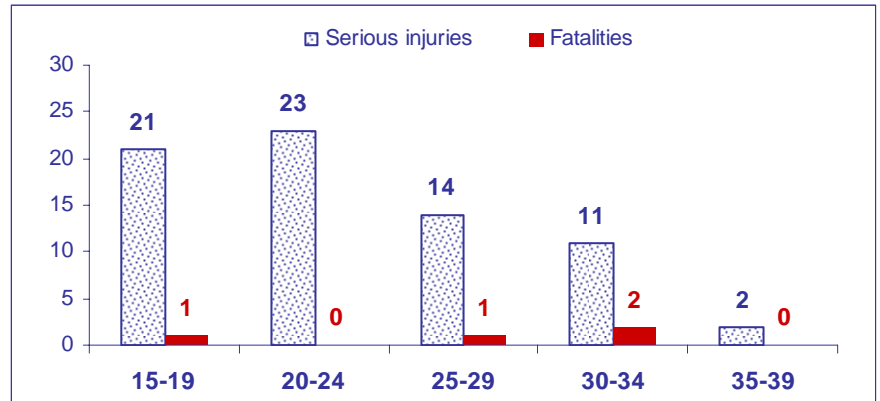
Percentage change between 2005 and corresponding five-year average

3-3: Serious injuries/fatalities by age group

Serious injuries

Age group	2005	Average 2000-2004	% Total
0-4	0	1.8	0.0%
5-9	2	3.2	1.8%
10-14	1	2.8	0.9%
15-19	21	16.8	18.8%
20-24	23	19.8	20.5%
25-29	14	13.2	12.5%
30-34	11	14.4	9.8%
35-39	2	9.4	1.8%
40-44	6	8.0	5.4%
45-49	13	6.2	11.6%
50+	15	15.0	13.4%
Unknown	4	1.6	3.6%
Total	112	112.2	100.0%

Top five serious injuries/fatalities by age group

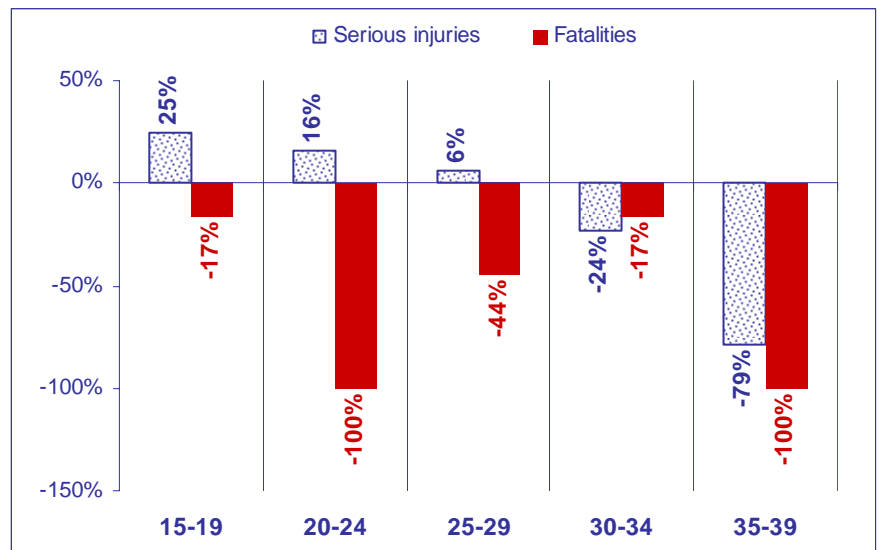


Top five road trauma data for second quarter 2005

Fatalities

Age group	2005	Average 2000-2004	% Total
0-4	3	0.2	25.0%
5-9	0	0.0	0.0%
10-14	1	0.2	8.3%
15-19	1	1.2	8.3%
20-24	0	2.4	0.0%
25-29	1	1.8	8.3%
30-34	2	2.4	16.7%
35-39	0	1.0	0.0%
40-44	1	0.4	8.3%
45-49	1	0.6	8.3%
50+	1	1.4	8.3%
Unknown	1	0.0	8.3%
Total	12	11.6	100.0%

Top five serious injuries/fatalities by age group - trend 2005



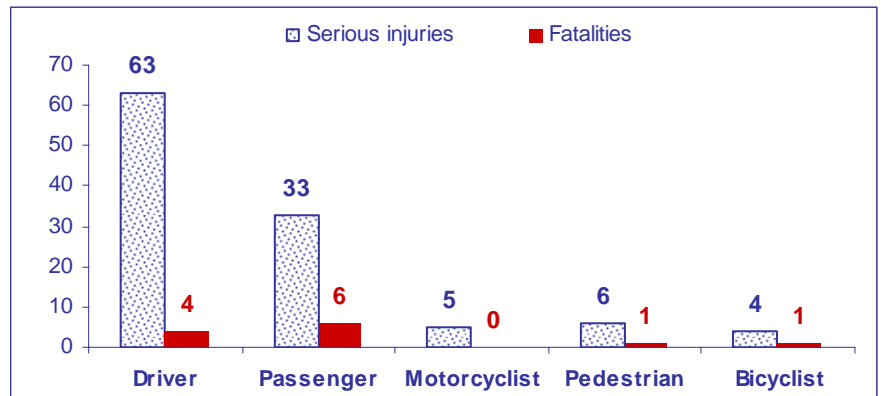
Percentage change between 2005 and corresponding five-year average

3-4: Serious injuries/fatalities by road user

Serious injuries

Road users	2005	Average 2000-2004	% Total
Driver	63	50.6	56.3%
Passenger	33	30.8	29.5%
Motorcyclist	5	16.0	4.5%
Pedestrian	6	9.4	5.4%
Bicyclist	4	3.0	3.6%
Passenger - luggage area	0	0.8	0.0%
Passenger - rear utility/truck	0	0.8	0.0%
Passenger - bus	0	0.4	0.0%
Motorcycle pillion	0	0.2	0.0%
Passenger - non-seating position	1	0.2	0.9%
Total	112	112.2	100.0%

Top five serious injuries/fatalities by road user

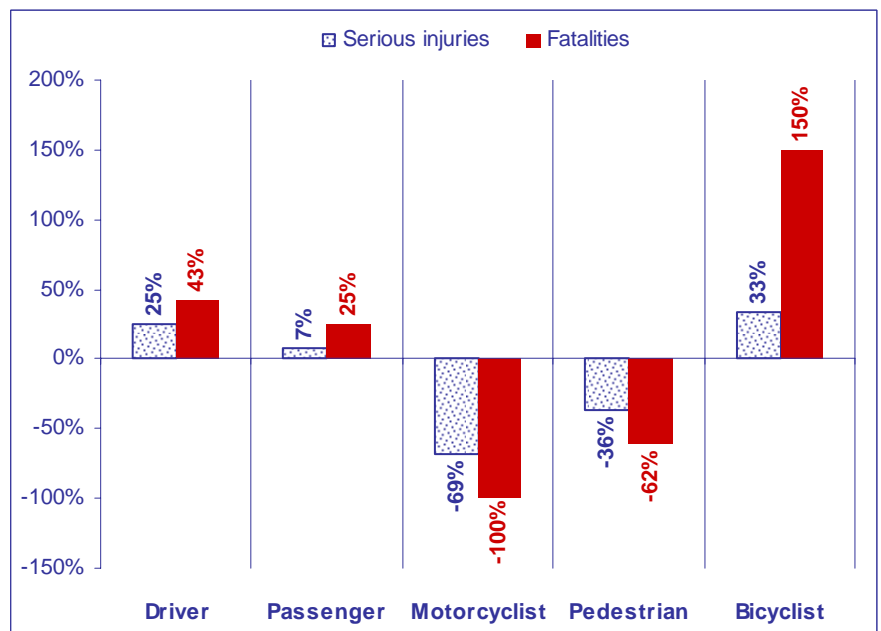


Top five road trauma data for second quarter 2005

Fatalities

Road users	2005	Average 2000-2004	% Total
Passenger	6	4.8	50.0%
Driver	4	2.8	33.3%
Pedestrian	1	2.6	8.3%
Motorcyclist	0	0.8	0.0%
Bicyclist	1	0.4	8.3%
Passenger - rear utility/truck	0	0.2	0.0%
Total	12	11.6	100.0%

Top five serious injuries/fatalities by road user - trend 2005



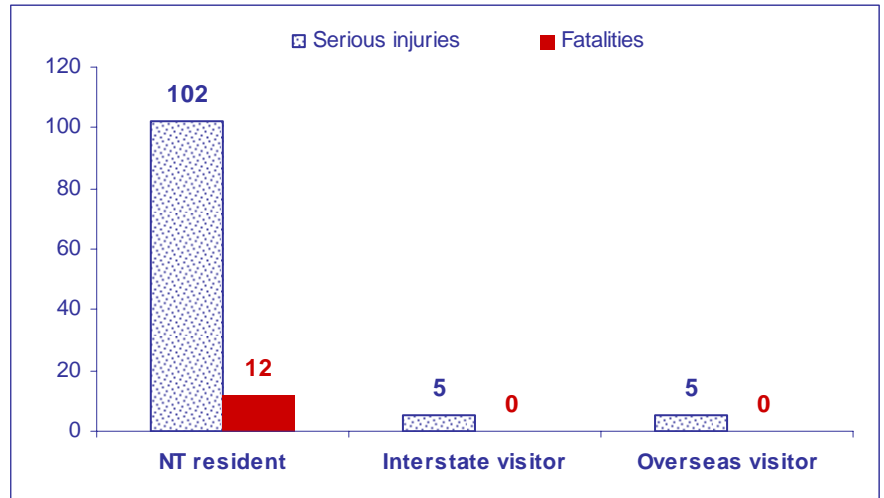
Percentage change between 2005 and corresponding five-year average

3-5: Serious injuries/fatalities by residency status

Serious injuries

Residency	2005	Average 2000-2004	% Total
NT resident	102	95.0	91.1%
Interstate visitor	5	11.8	4.5%
Overseas visitor	5	4.4	4.5%
Not stated	0	1.0	0.0%
Total	112	112.2	100.0%

Serious injuries/fatalities by residency status

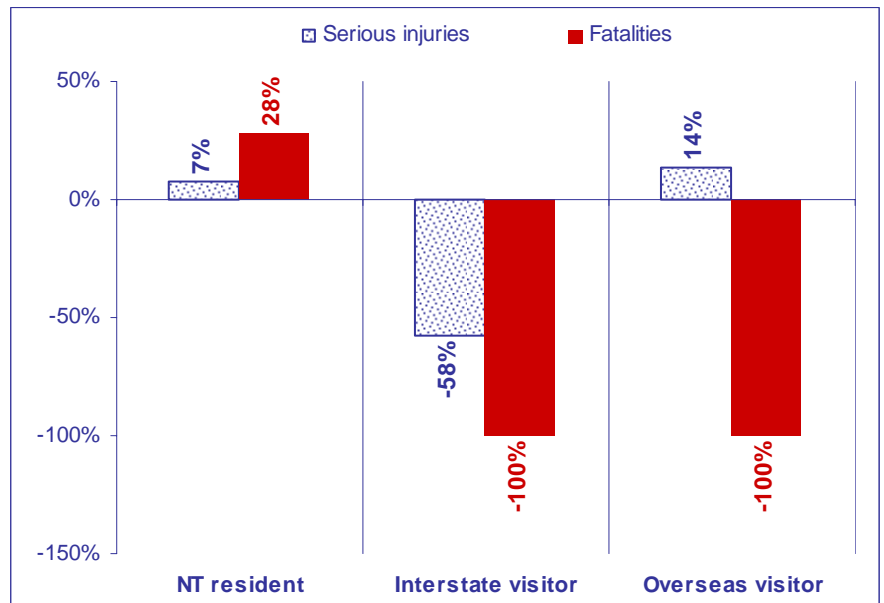


Road trauma data for second quarter 2005

Fatalities

Residency	2005	Average 2000-2004	% Total
NT resident	12	9.4	100.0%
Overseas visitor	0	1.2	0.0%
Interstate visitor	0	1.0	0.0%
Not stated	0	0.0	0.0%
Total	12	11.6	100.0%

Serious injuries/fatalities by residency status



Percentage change between 2005 and corresponding five-year average

NT main causes of road trauma: April-June 2005

Alcohol, Speed, Fatigue, Seatbelts and Pedestrians

4-1: Alcohol related serious injury/fatal crashes

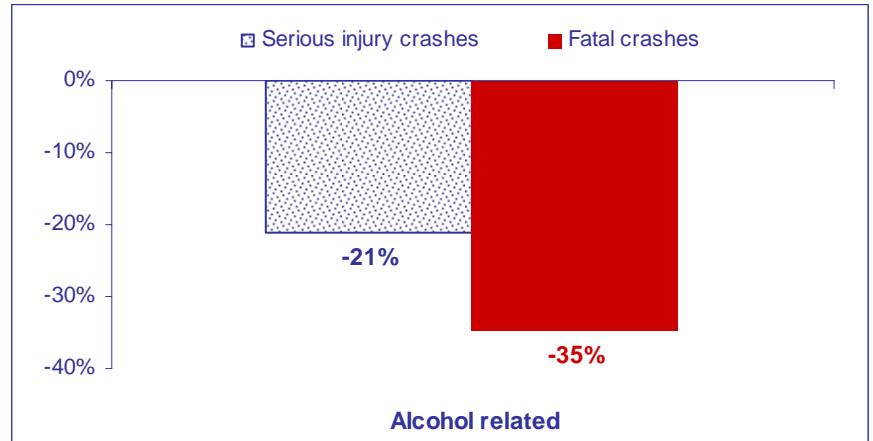
Serious injury crashes

Alcohol	2005	Average 2000-2004	% Total
Non-alcohol related	66	67.8	88.0%
Alcohol related	9	11.4	12.0%
Total	75	79.2	100.0%

Fatal crashes

Alcohol	2005	Average 2000-2004	% Total
Non-alcohol related	8	5.8	72.7%
Alcohol related	3	4.6	27.3%
Total	11	10.4	100.0%

Alcohol related crashes - trend 2005



Percentage change between 2005 and corresponding five-year average

4-2: Speed related serious injury/fatal crashes

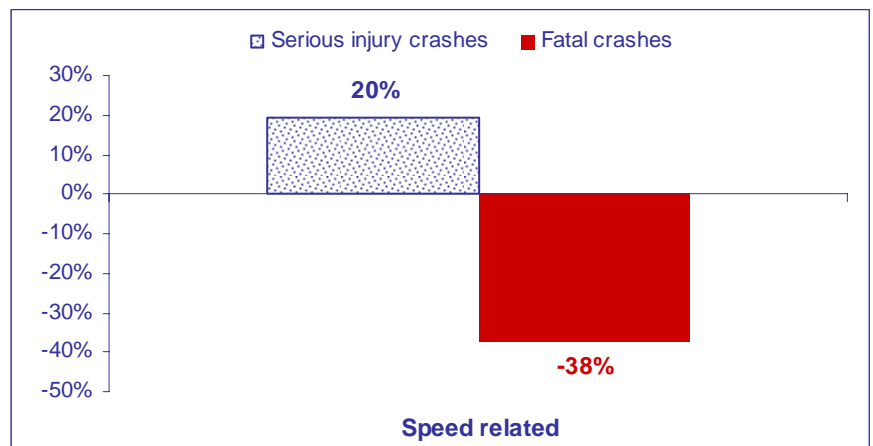
Serious injury crashes

Speed	2005	Average 2000-2004	% Total
Non-speed related	64	70.0	85.3%
Speed related	11	9.2	14.7%
Total	75	79.2	100.0%

Fatal crashes

Speed	2005	Average 2000-2004	% Total
Non-speed related	10	8.8	90.9%
Speed related	1	1.6	9.1%
Total	11	10.4	100.0%

Speed related crashes - trend 2005



Percentage change between 2005 and corresponding five-year average

NT main causes of road trauma: April-June 2005

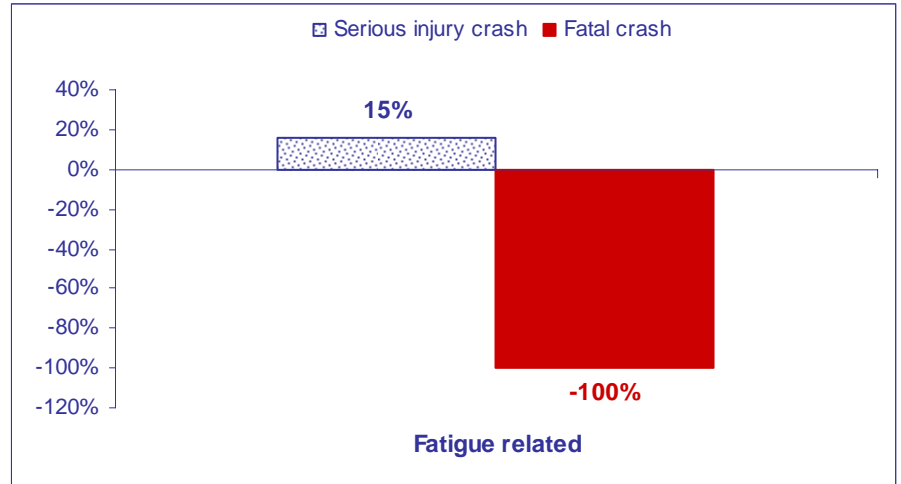
Alcohol, Speed, Fatigue, Seatbelts and Pedestrians

4-3: Fatigue related serious injury/fatal crashes

Serious injury crashes

Fatigue	2005	Average 2000-2004	% Total
Non-fatigue related	72	76.6	96.0%
Fatigue related	3	2.6	4.0%
Total	75	79.2	100.0%

Fatigue related crashes - trend 2005



Percentage change between 2005 and corresponding five-year average

Fatal crashes

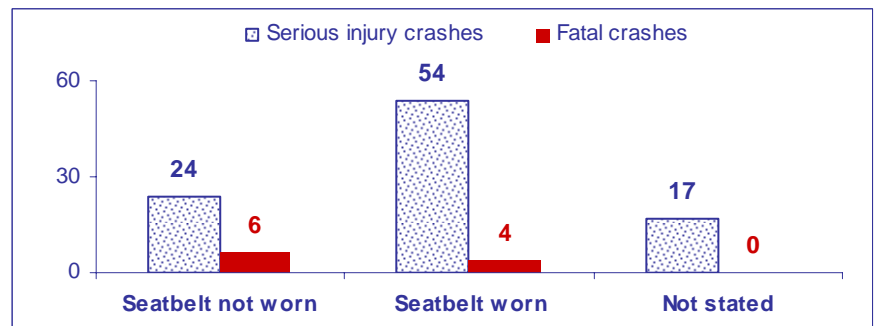
Fatigue	2005	Average 2000-2004	% Total
Non-fatigue related	11	10.2	100.0%
Fatigue related	0	0.2	0.0%
Total	11	10.4	100.0%

4-4: Seatbelt related serious injuries/fatalities

Serious injuries

Fatigue	2005	Average 2000-2004	% Total
Seatbelt worn	54	53.4	56.8%
Not stated	17	15.0	17.9%
Seatbelt not worn	24	13.0	25.3%
Total	95	81.4	100.0%

Seatbelt related serious injuries/fatalities

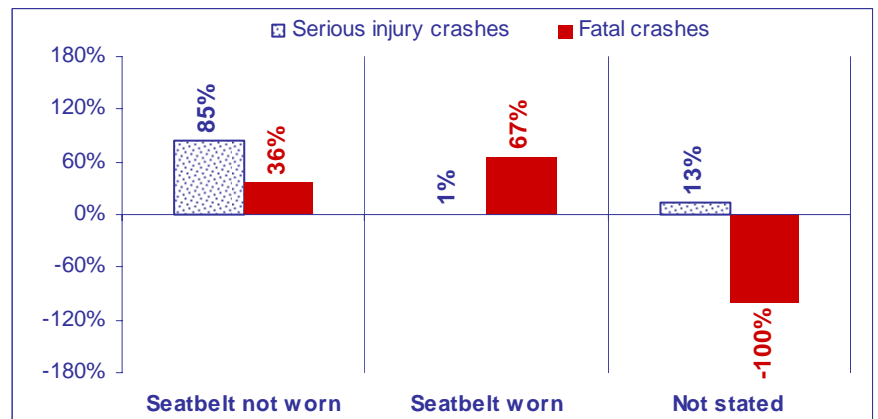


Percentage change between 2005 and corresponding five-year average

Fatalities

Fatigue	2005	Average 2000-2004	% Total
Seatbelt not worn	6	4.4	60.0%
Seatbelt worn	4	2.4	40.0%
Not stated	0	0.8	0.0%
Total	10	7.6	100.0%

Seatbelt related serious injuries/fatalities - trend 2005



Road trauma data for second quarter 2005

NT main causes of road trauma: April-June 2005

Alcohol, Speed, Fatigue, Seatbelts and Pedestrians

4-5: Pedestrian related serious injuries/fatalities

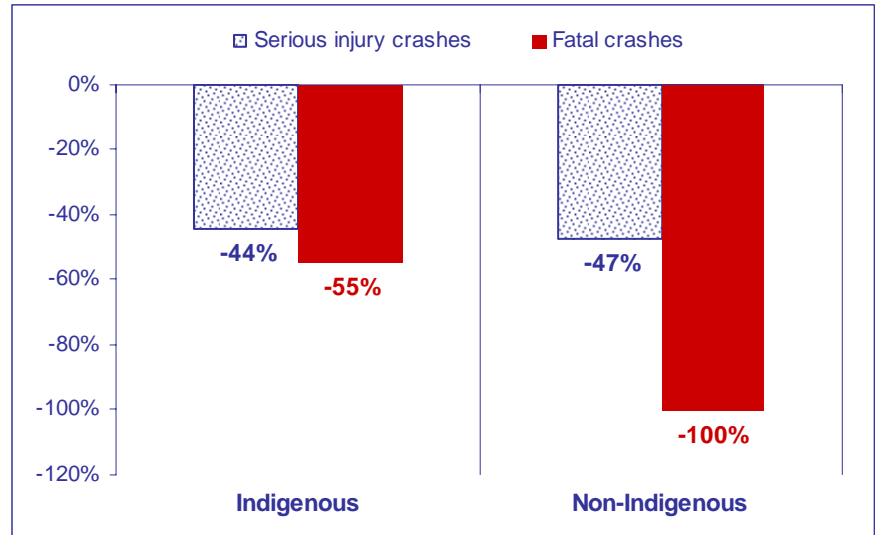
Serious injuries

Pedestrians	2005	Average 2000-2004	% Total
Indigenous	3	5.4	60.0%
Non-Indigenous	2	3.8	40.0%
Not stated	0	0.2	0.0%
Total	5	9.4	100.0%

Fatalities

Pedestrians	2005	Average 2000-2004	% Total
Indigenous	1	2.2	100.0%
Non-Indigenous	0	0.4	0.0%
Total	1	2.6	100.0%

Pedestrian related serious injuries/fatalities - trend 2005



Percentage change between 2005 and corresponding five-year average